



PROJECT FOR SUSTAINABLE CAPACITY BUILDING FOR EFFECTIVE PARTICIPATION IN THE BIOSAFETY CLEARING HOUSE

INTRODUCTION TO THE WORKSHOP

Prof Dr Ossama AbdelKawy
BCH Regional Specialist

OPENING!

- **Keynote speakers & Facilitators (About us)**
- **Workshop objectives**
- **Agenda overview**
- **Websites used**
- **Knowledge Assessment and Workshop Evaluation Forms**

KEYNOTE SPEAKERS & FACILITATORS

Professor Ossama AbdelKawy

Regional Specialist, the BCH III Project, UN Environment

Prof of Microbiology, Atomic Energy Authority, Egypt

Email: elkawyo@gmail.com

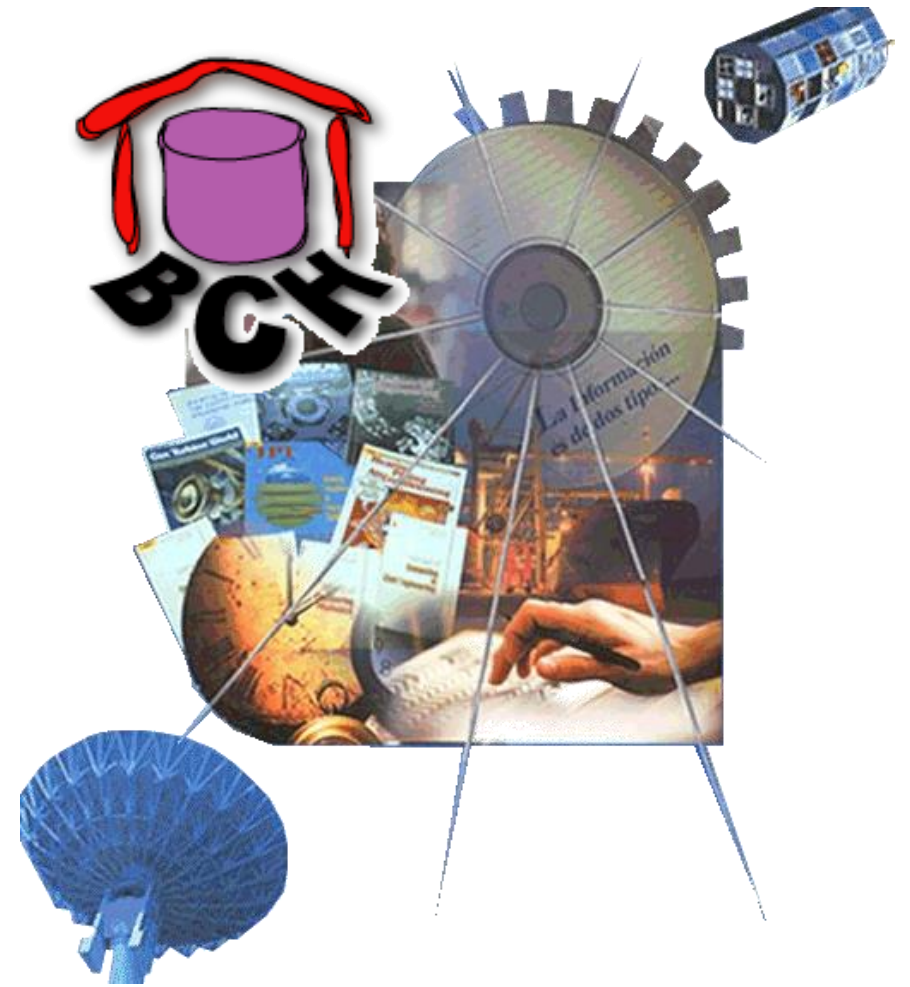
Telephone: +201005601136

Skype: abdkawy



WHAT IS IT ABOUT?

- The Biosafety Clearing-House (BCH) is an information exchange mechanism established by the Cartagena Protocol to assist Parties to implement its provisions and to facilitate sharing of information, and experience with, living modified organisms (LMOs).
- All parties to the Protocol are obliged to disclose and publish certain categories of information on the BCH to be compliant with the Protocol.



WORKSHOP OBJECTIVES/ OUTCOMES

- Enhance the national Capacity to use the BCH Central Portal to search and find biosafety information to support capacity building and decision making on *GMOs*,
- Define/Establish procedure or mechanisms to flow information onto the BCH and Identify/Define roles of Competent National Authorities and National Focal Points relevant to the Biosafety Protocol, and
- Gather new ideas and recommendations for improving project's coordination, processes, logistics and country services

WORKSHOP AGENDA OVERVIEW



USED WEBSITES

- The biosafety Clearing house

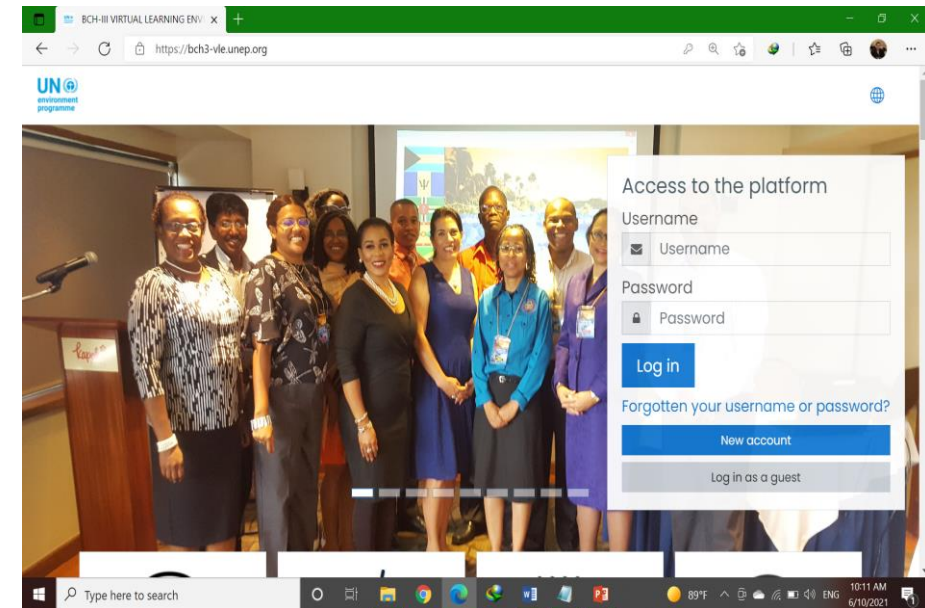
<https://bch.cbd.int/>

- The Virtual Learning Environment

<https://bch3-vle.unep.org/>

VIRTUAL LEARNING ENVIRONMENT

- Is tool to make all the BCH learning objects accessible to different target audiences.
- It includes a variety of pre-developed training material such as manuals, interactive training software, case studies and curricula for different stakeholders.
- Training materials are organized as virtual courses over which customized national and regional training solutions can be built.



<https://bch3-vle.unep.org/>

URL for the website

https://bch3-vle.unep.org//



Access to the platform

Username

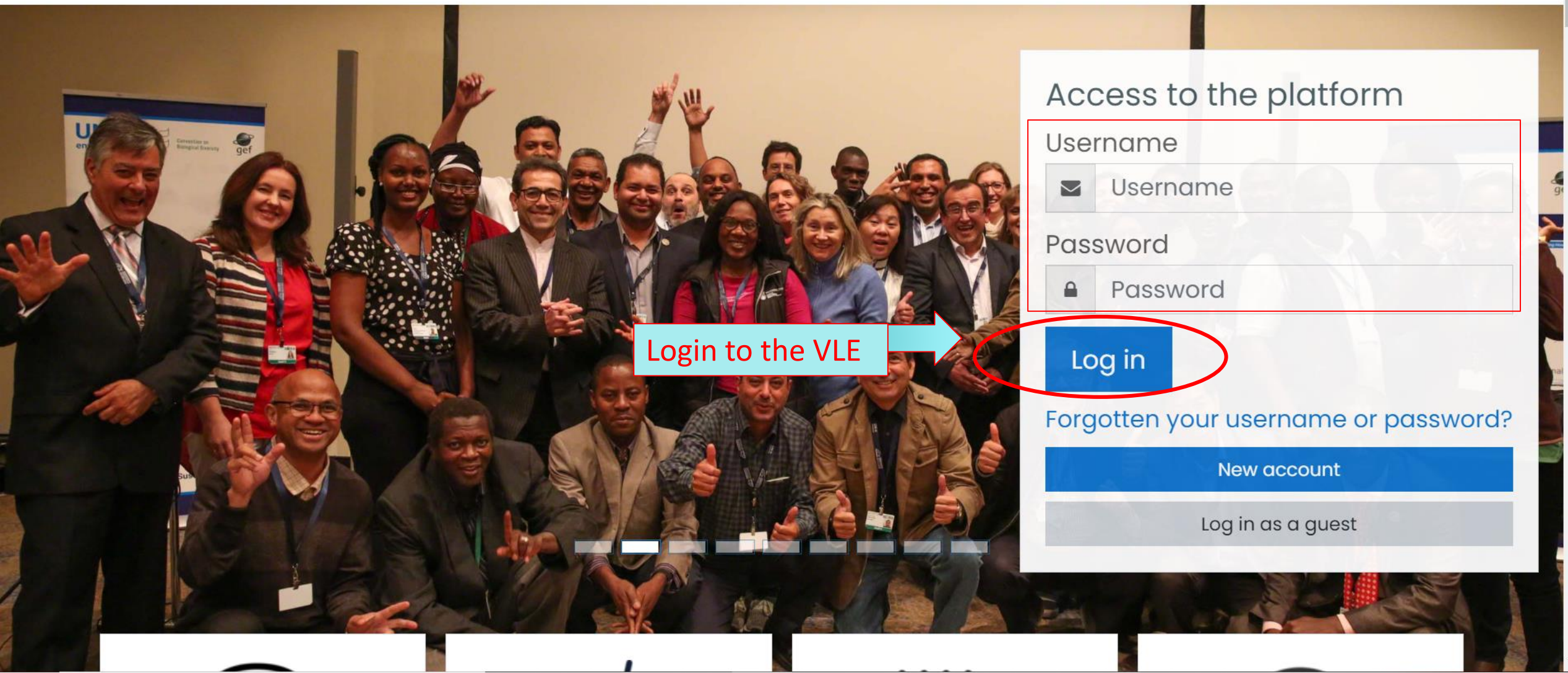
Password

[Log in](#)

[Forgotten your username or password?](#)

[New account](#)

[Log in as a guest](#)



Access to the platform

Username

Password

Log in

[Forgotten your username or password?](#)

New account

Log in as a guest

Login to the VLE





If you forgot your password

Access to the platform

Username

Password

[Log in](#)

[Forgotten your username or password?](#)

[New account](#)

[Log in as a guest](#)



Access to the platform

Username

Password

Log in

Forgotten your username or password?

New account

Log in as a guest

New account

▼ Collapse all

▼ Choose your username and password

Username* elkawyo@gmail.cc

The password must have at least 8 characters, at least 1 digit(s), at least 1 lower case letter(s), at least 1 upper case letter(s), at least 1 non-alphanumeric character(s) such as as *, -, or #

Ab12345#

Password* Unmask

▼ More details

Email address*

Email (again)*

First name*

Surname*

City/town

Country

Create my new account

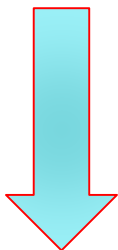
Cancel

Fill the mandatory fields marked with red Asterisk

Click on create new account

Check your email for the welcome message and activation link

Scroll down your National workshop support course



UN BIODIVERSITY CONFERENCE

Investing in biodiversity for people and planet

COP 14 - CP/MOP9 - NP/MOP3
Sharm El Sheikh, Egypt, 2018

Courses

- ▶ PUBLIC BCH TRAINING
- ▶ NATIONAL BCH TRAINING
- ▶ WEBINARS
- ▶ GLOBAL AND REGIONAL WORKSHOPS
- ▶ ASIA REGIONAL TRAINING OF TRAINERS
- ▶ CARIBBEAN REGIONAL TRAINING OF TRAINERS
- ▶ BCH TRAINING VIDEOS

▶ Expand all





NATIONAL BCH TRAINING

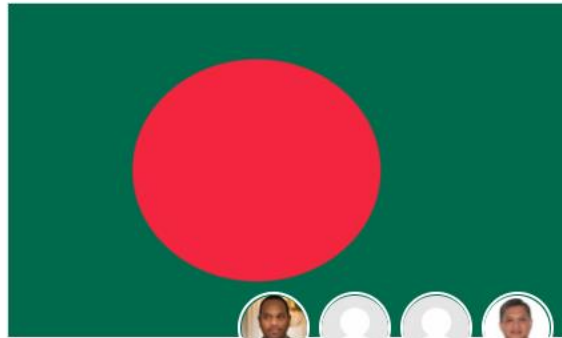
Home Courses NATIONAL BCH TRAINING

Course categories: NATIONAL BCH TRAINING

Search courses

Go

1 2 »



BANGLADESH NATIONAL BCH COURSE



BELARUS NATIONAL BCH



GRENADA NATIONAL BCH WORKSHOP COURSE



GUINE-BISSEAU CIISB NACIONAL

BCH-III VIRTUAL LEARNING ENVIRONMENT

Home > Courses > Search > angola

Search courses

Search results: 1



ANGOLA NATIONAL BCH COURSE

Enroll yourself to the course



Access

Category: NATIONAL BCH TRAINING

ENROLMENT KEY

▼ Self enrolment (Student)

Enrolment key Unmask

Enrol me



The image shows a user interface for self-enrolment. A red circle highlights the 'Enrolment key' input field. A blue arrow points from a light blue box containing the text 'BCH3-AO' to the input field. Below the input field is an 'Unmask' checkbox and an 'Enrol me' button.

ANGOLA NATIONAL BCH COURSE



Home > Courses > NATIONAL BCH TRAINING > ANGOLA NATIONAL BCH COURSE


ANGOLA NATIONAL BCH TRAINING

Welcome to the Biosafety Clearing-House National Workshop.

In this on-line course you will be able to access all training materials used during the course, presentations, exercises, and notes of the participants.

Through the associated fora, participants will be able to share experiences, suggest improvements for national training, and make technical enquiries on different aspects of the training.

The complete set of BCH Training Materials is publicly available. Please click on the following link to access them.

 Announcements

[Go to the public English BCH Course](#)

[BCH WEBINARS \(ENGLISH\)](#)

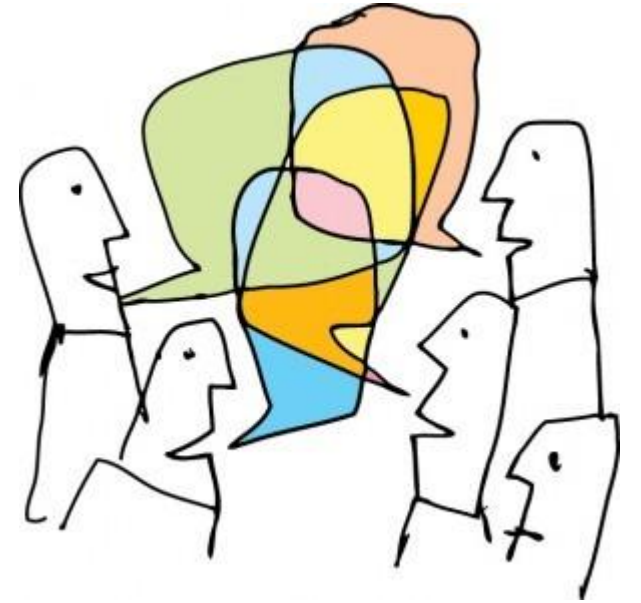


 FORUM FOR COURSE EDITORS (REGIONAL ADVISORS)

ANGOLA ONLINE TRAINING WORKSHOP

WORKSHOP FORMS

- Capture your expectation and concerns;
- Measure your Knowledge increase;
- Workshop evaluation;



HOUSEKEEPING

- Restrooms
- Breaks
- Meals



For more information, please email

elkawyo@gmail.com

Thank you !